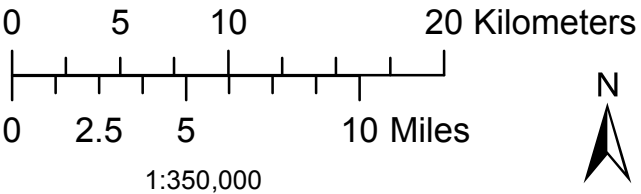


Mid-West Planning District

- Mid-West Planning District Boundary
- First Nations
- Townships
- Groundwater Sensitivity Area
- No Readily Available Groundwater Sensitivity Information
- Old and Current Waste Disposal Sites
- Municipal Lagoon
- St-Lazare Oxbow Lagoon
- Water
- Rivers and Streams
- Main Roads (Provincial Trunk Highways and Provincial Roads)
- Secondary Roads
- Railway

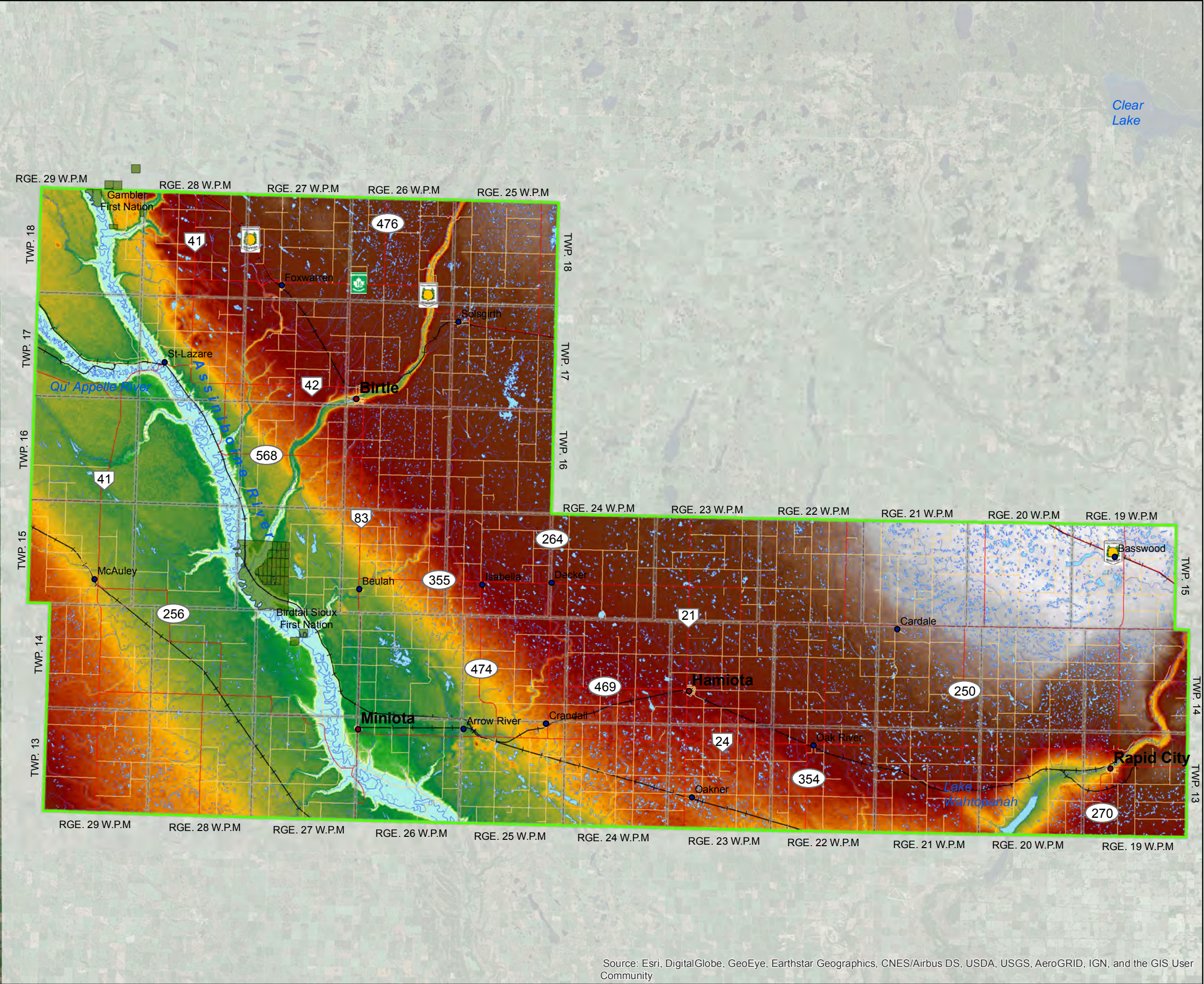
Map 4
General Locations of
Groundwater Sensitivity, Waste Disposal
Sites, and Municipal Lagoons

Coordinate System: UTM 14N NAD 83
Data Sources: ProvMB, NRCAN, Dillon Consulting (2012), MRB, Repromap, Cochrane Engineering (2002), del and Cochrane Engineering (2001), Google Earth (variable dates)
Note: Birdtail Sioux Dakota Nation IR 57C in Foxwarren not shown.
Topographic Source Scale: 1:50,000
Date Created: July 17, 2017



- DRAFT -
All Boundaries and Locations for General Reference Only

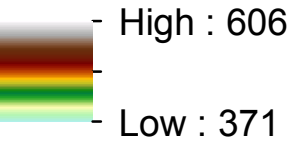
Source: Esri, DigitalGlobe, GeoEye, Earthstar Geographics, CNES/Airbus DS, USDA, USGS, AeroGRID, IGN, and the GIS User Community



Mid-West Planning District

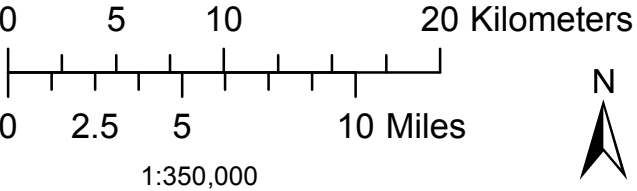
- Mid-West Planning District Boundary
- First Nations
- Townships
- Water
- Rivers and Streams
- Main Roads
(Provincial Trunk Highways and Provincial Roads)
- Secondary Roads
- Railway

Elevation (masl)



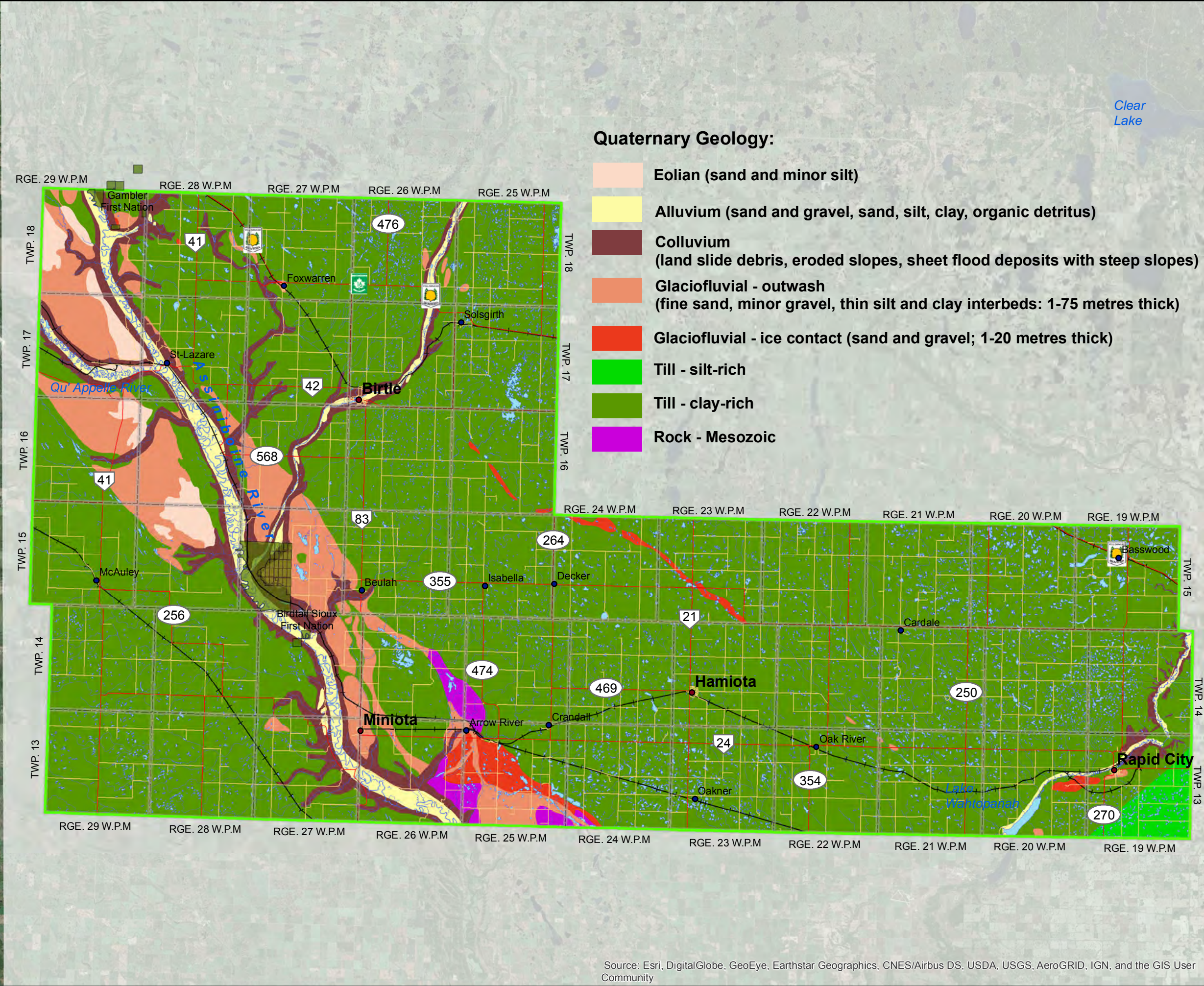
Map 5
Regional View
Elevation

Coordinate System: UTM 14N NAD 83
Topographic Data Source: ProvMB, NRCAN
SRTM Elevation Data Source: Global Land Cover Facility, NASA, USGS, 2000
Note: Birdtail Sioux Dakota Nation IR 57C in Foxwarren not shown.
Topographic Source Scale: 1:50,000
Date Created: November 2, 2016



- FINAL -
All Boundaries and Locations for General Reference Only

Source: Esri, DigitalGlobe, GeoEye, Earthstar Geographics, CNES/Airbus DS, USDA, USGS, AeroGRID, IGN, and the GIS User Community

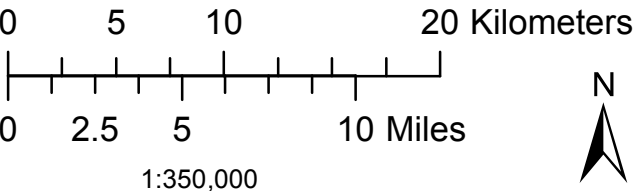


Mid-West Planning District

- Mid-West Planning District Boundary
- First Nations
- Townships
- Water
- Rivers and Streams
- Main Roads (Provincial Trunk Highways and Provincial Roads)
- Secondary Roads
- Railway

Map 6
Regional View
Surficial Geology

Coordinate System: UTM 14N NAD 83
Topographic Data Source: ProvMB, NRCAN
Surficial Geology Data Source: Manitoba Science, Technology, Energy and Mines, 2006
Note: Birdtail Sioux Dakota Nation IR 57C in Foxwarren not shown.
Topographic Source Scale: 1:50,000
Date Created: April 21, 2017



- FINAL -
All Boundaries and Locations for General Reference Only

Source: Esri, DigitalGlobe, GeoEye, Earthstar Geographics, CNES/Airbus DS, USDA, USGS, AeroGRID, IGN, and the GIS User Community