

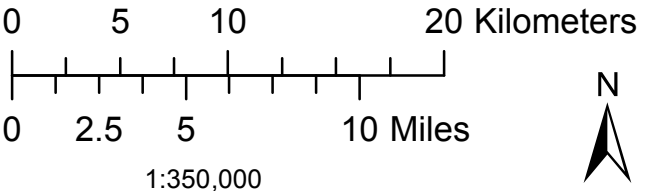
Mid-West Planning District

- Protected Wildlife Management Area
- Wildlife Management Area
- Wildlife Management Area Proposed for Protection
- Wildlife Management Area Protected Excluding Petroleum

- Mid-West Planning District Boundary
- First Nations
- Townships
- Water
- Rivers and Streams
- Main Roads (Provincial Trunk Highways and Provincial Roads)
- Secondary Roads
- Railway

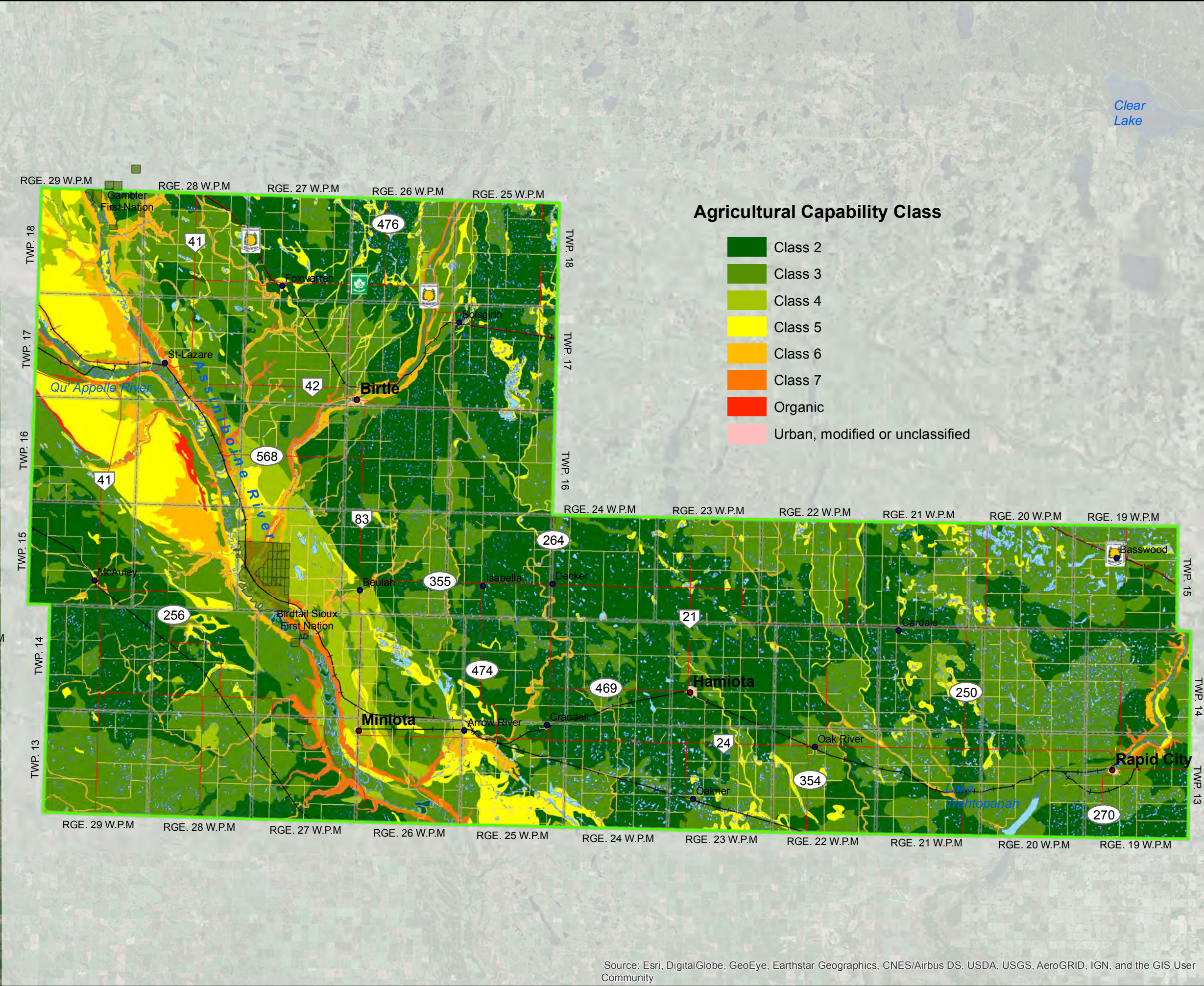
**Map 7
Regional View
Wildlife Management Areas**

Coordinate System: UTM 14N NAD 83
Data Sources: ProvMB, NRCAN
Note: Birtail Sioux Dakota Nation IR 57C in Foxwarren not shown.
Topographic Source Scale: 1:50,000
Date Created: April 21, 2017



- FINAL -
All Boundaries and Locations for General Reference Only

Source: Esri, DigitalGlobe, GeoEye, Earthstar Geographics, CNES/Airbus DS, USDA, USGS, AeroGRID, IGN, and the GIS User Community



Agricultural Capability Class

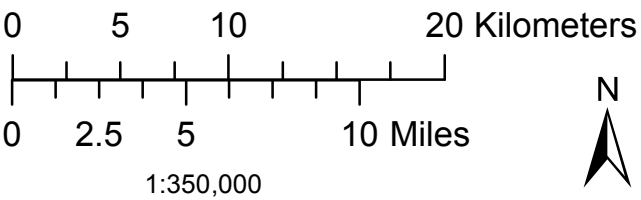
- Class 2
- Class 3
- Class 4
- Class 5
- Class 6
- Class 7
- Organic
- Urban, modified or unclassified

Mid-West Planning District

- Mid-West Planning District Boundary
- First Nations
- Townships
- Water
- Rivers and Streams
- Main Roads
(Provincial Trunk Highways and Provincial Roads)
- Secondary Roads
- Railway

**Map 8
Agricultural Capability**

Coordinate System: UTM 14N NAD 83
Data Source: ProvMB, NRCAN
Topographic Source Scale: 1:50,000
Soils Survey Scale: 1:126,720
Note: Birtail Sioux Dakota Nation IR 57C in Foxwarren not shown.
Date Created: April 21, 2017



- FINAL -
All Boundaries and Locations for General Reference Only

Source: Esri, DigitalGlobe, GeoEye, Earthstar Geographics, CNES/Airbus DS, USDA, USGS, AeroGRID, IGN, and the GIS User Community